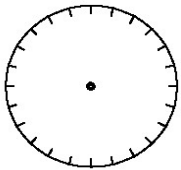


# IOWA NONFLAMMABLE PIPELINE CROSSING

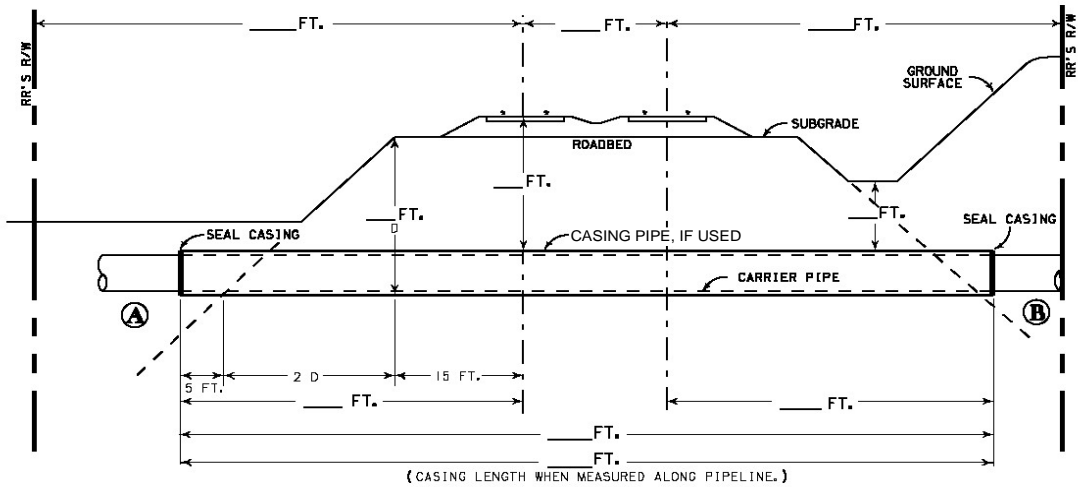
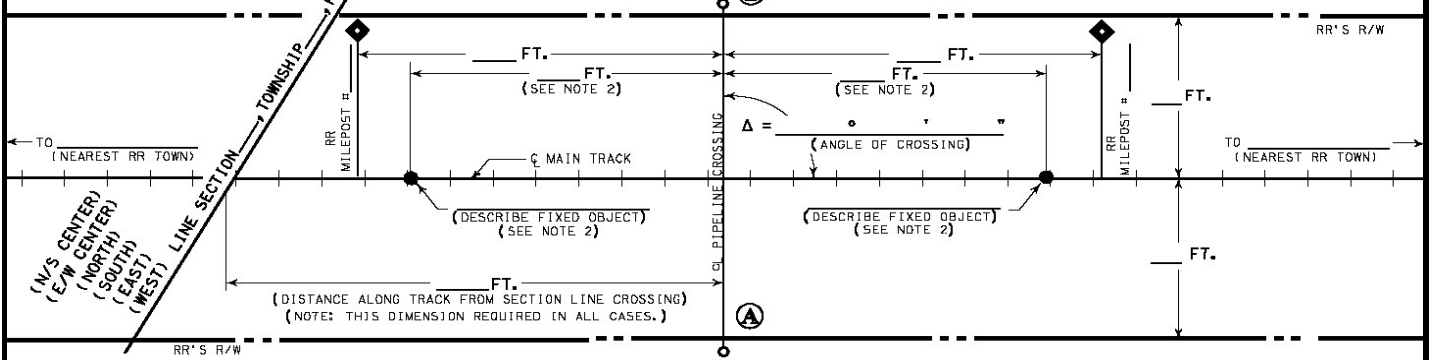
PLACE ARROW INDICATING NORTH DIRECTION RELATIVE TO TRACK



NO SCALE

SPECIFICATION EXHIBIT NO. \_\_\_\_\_  
SUBMITTED UNDER IOWA UTILITIES BOARD RULE NO. 199-42.

NOTE: ONE OR MORE AVAILABLE DIMENSIONS MUST BE FILLED IN TO COMPLETE THIS NOTICE.



- A) IS PIPELINE CROSSING WITHIN PUBLIC ROAD?  YES;  NO;
- B) IF YES, NAME OF STREET \_\_\_\_\_
- C) CARRIER PIPE:
  - COMMODITY TO BE CONVEYED \_\_\_\_\_
  - OPERATING PRESSURE \_\_\_\_\_ PSIG
  - MAXIMUM OPERATING PRESSURE \_\_\_\_\_ PSIG
  - WALL THICKNESS \_\_\_\_\_; DIAMETER \_\_\_\_\_; MATERIAL \_\_\_\_\_;
- D) CASING PIPE, IF USED:
  - WALL THICKNESS \_\_\_\_\_; DIAMETER \_\_\_\_\_; MATERIAL \_\_\_\_\_;
- E) METHOD OF INSTALLATION:
  - \_\_\_\_\_ HORIZONTAL DIRECTIONAL DRILLING;
  - \_\_\_\_\_ DRY BORE AND JACK (WET BORE NOT PERMITTED);
  - \_\_\_\_\_ TUNNEL; OTHER \_\_\_\_\_
- F) WILL CONSTRUCTION BE BY AN OUTSIDE CONTRACTOR?  YES;  NO;
- G) DISTANCE FROM CENTER LINE OF TRACK TO NEAR FACE OF BORING AND JACKING PITS WHEN MEASURED AT RIGHT ANGLES TO THE TRACK \_\_\_\_\_ (30' MIN.)

**FOR RAILROAD REPRESENTATIVE USE**

RAILROAD \_\_\_\_\_ MP \_\_\_\_\_

SUBDIVISION \_\_\_\_\_ E.S. \_\_\_\_\_

\_\_\_\_\_, IOWA (STATE)

(NEAREST STATION) \_\_\_\_\_ (COUNTY) \_\_\_\_\_

PHONE: \_\_\_\_\_ RR FILE NO. \_\_\_\_\_

E-MAIL \_\_\_\_\_

**FOR UTILITY REPRESENTATIVE USE**

UTILITY \_\_\_\_\_ DATE: \_\_\_\_\_

ADDRESS \_\_\_\_\_

BY \_\_\_\_\_ PHONE \_\_\_\_\_

E-MAIL \_\_\_\_\_

TO BE COMPLETED BY **SMALL UTILITY** AS DEFINED IN THE IUB RULES  
I CERTIFY THAT THIS UTILITY QUALIFIES AS A SMALL UTILITY UNDER  
IOWA UTILITIES BOARD RULE 199 IAC 42.1.  
SIGNED \_\_\_\_\_ DATE \_\_\_\_\_

# GUIDELINES TO IOWA NONFLAMMABLE PIPELINE CROSSING

1. Horizontal distances, in cross section AB on the Specification Exhibit, to be measured at right angles from centerline of track, except as noted.
2. Allowable fixed objects include: back walls of bridges, centerline of road crossings and overhead viaducts (give road name), or centerline of culverts.
3. Installation shall be in accordance with Iowa Utilities Board Rule 199 IAC 42.7.
4. Steel Casing Wall Thickness Chart:

<u>Minimum Thickness</u>		<u>Diameter of Casing Pipe</u>
0.2500"	1/4"	12" or less
0.3125"	5/16"	Over 12" – 18"
0.3750"	3/8"	Over 18" – 22"
0.4375"	7/16"	Over 22" – 28"
0.5000"	1/2"	Over 28" – 34"
0.5625"	9/16"	Over 34" – 42"
0.6250"	5/8"	Over 42" – 48"

or American Railway Engineering and Maintenance Right-of-Way Association (AREMA) Manual for Railway Engineering, Chapter 1, Part 5, Table 1-5-5.

5. The form specifies that one or more available dimensions are requested, but providing additional dimensions will help the Railroad process the application more quickly.
6. It is recommended that the Railroad be contacted in advance for fiber optic cable and railroad signal locations.
7. For unusually large pipeline crossings that do not involve special circumstances, or for crossings where geotechnical study has identified potentially destabilizing soil conditions, the railroad company may require that a railroad representative be present during installation, and may also require the presence of a survey crew to monitor the tracks for any change in alignment.
8. Nearest Railroad Town means nearest town on the railroad in each direction. If not known, reference Iowa DOT Rail map at <http://www.iowadot.gov/iowarail/railroads/maps/maphome.htm>.